

PIANO INFRAREGIONALE ATTIVITA' ESTRATTIVE 2009-2028

P.A.E. 2009-2018

P.A.E. Comune di Cento

 AREE PRIORITARIE PER GLI INTERVENTI DI RINATURAZIONE E DI REALIZZAZIONE DELLA RETE ECOLOGICA PROVINCIALE

IL SINDACO: Flavio Tuzet

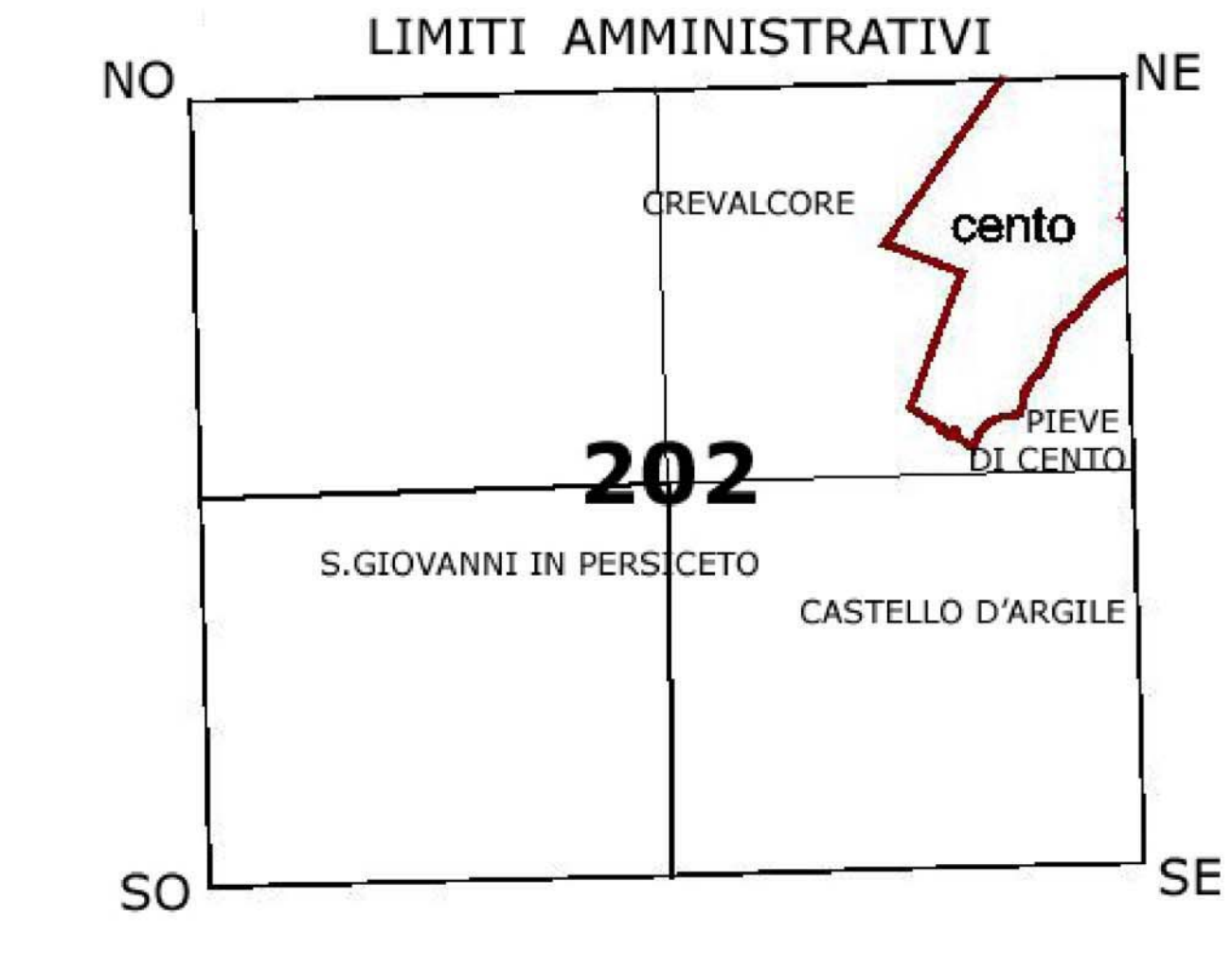
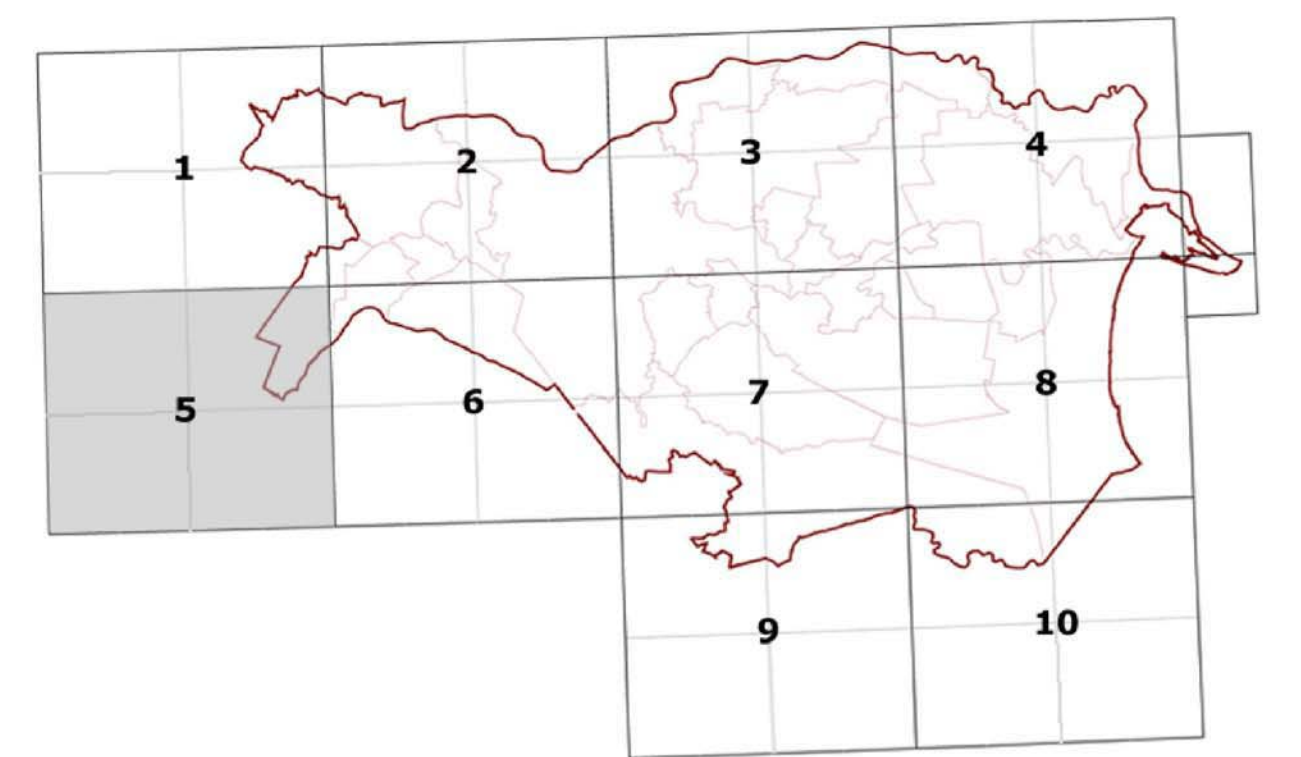
 IL RESPONSABILE DEL PROCEDIMENTO: Arch. Moreno Pici









 IL SEGRETARIO: Dott.ssa Maria di Marzio

 LA PRESIDENTE: Mariavita Zappertiera

 IL SEGRETARIO: Ettore Mario Capaldi

Riferimento al Quadro d'Unione della Carta Topografica Generale 1:25.000



- LEGENDA**
-  confini comunali
 -  Stepping stone Esistente
 -  Stepping stone di Progetto
 -  Nodi progetto
 -  Nodo ecologico esistente _ area tampone
 -  Nodo ecologico esistente _ core area
 -  Corridoio ecologico secondario
 -  Corridoio ecologico primario
 -  Areali speciali _ connettivo ecologico diffuso

