

**PIANO
INFRAREGIONALE
ATTIVITA'
ESTRATTIVE
2009-2028**

P.A.E. 2009-2018

**P.A.E.
Comune di Bondeno**
 AREE PRIORITARIE PER GLI INTERVENTI DI
 RINATURAZIONE E DI REALIZZAZIONE DELLA
 RETE ECOLOGICA PROVINCIALE

Scala 1:25.000

IL SINDACO
 Alan Fabbri

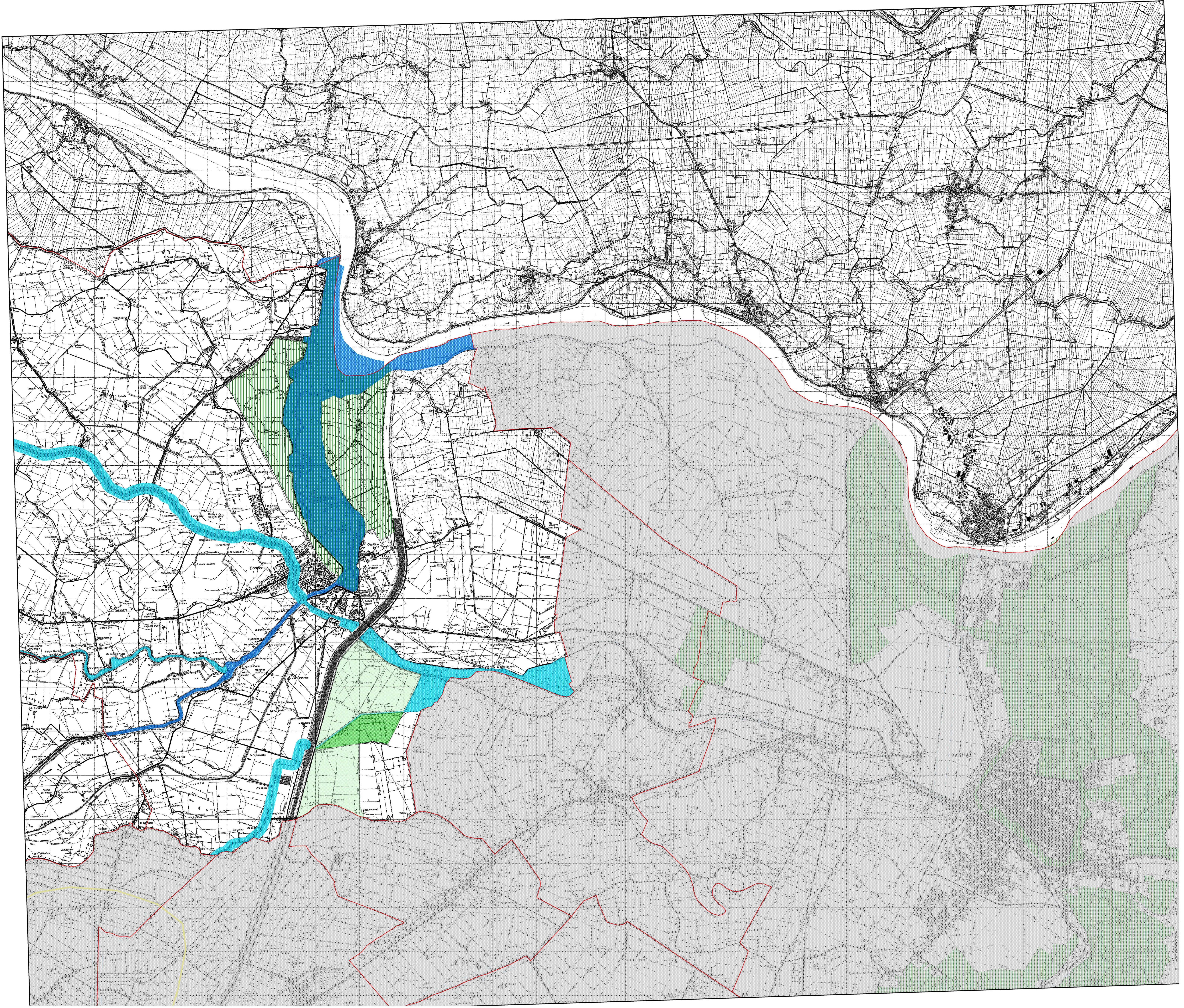
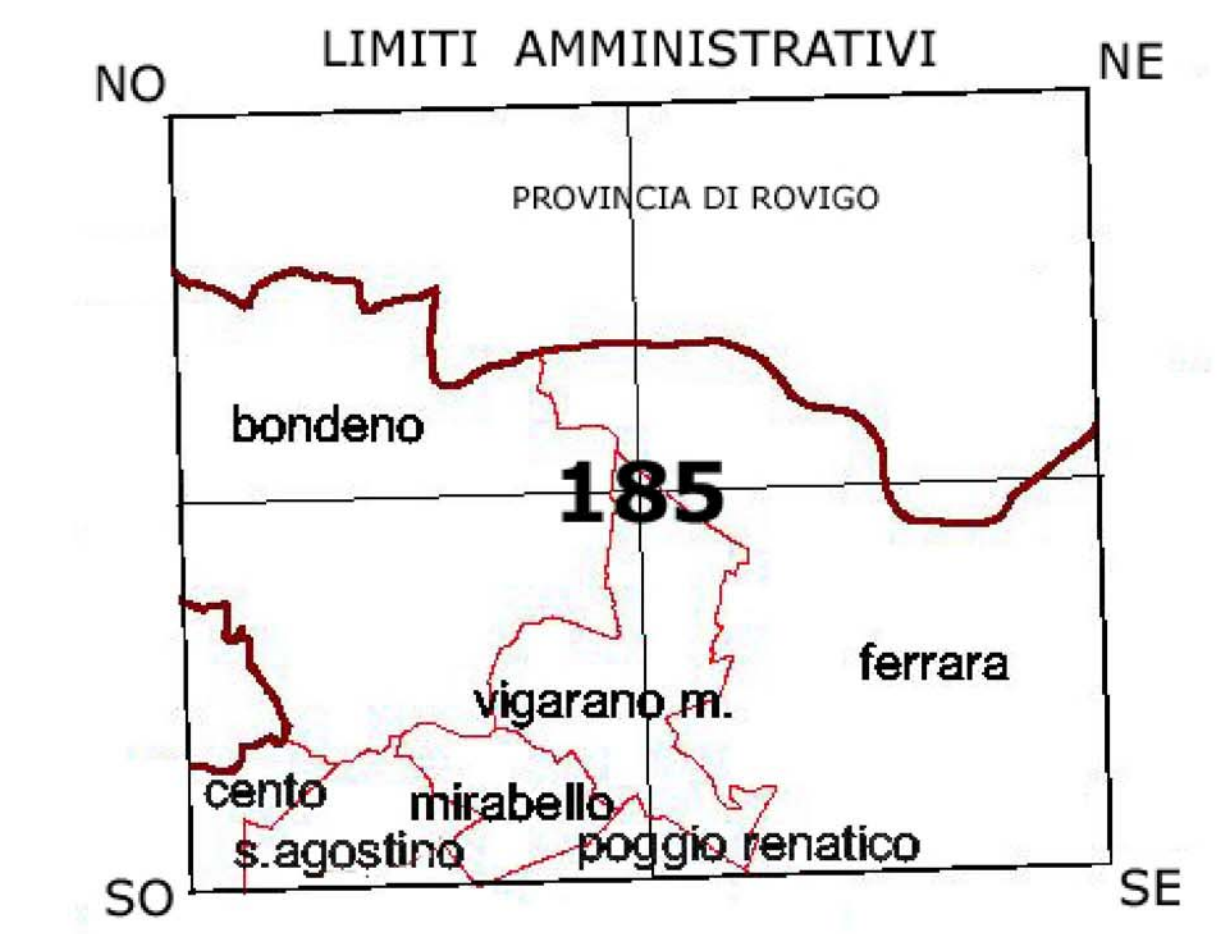
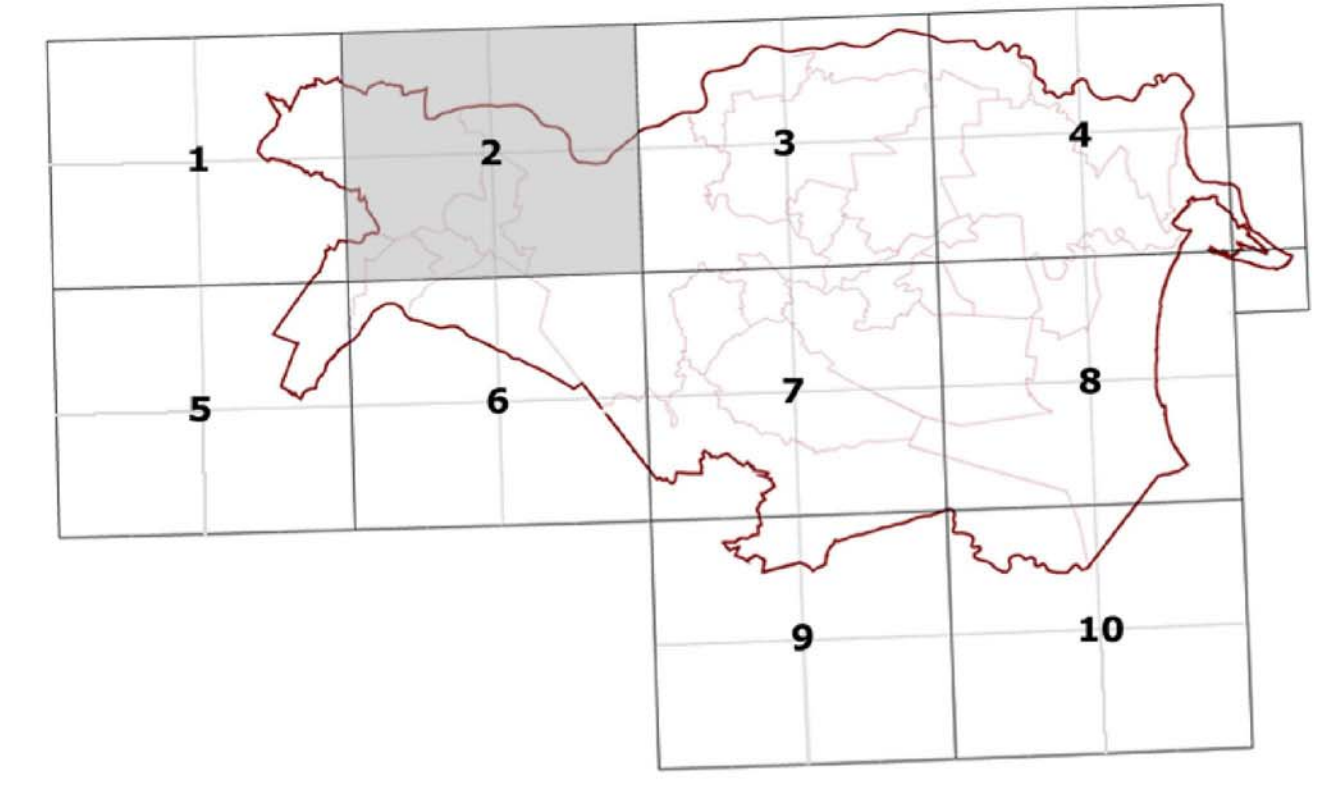
LA PRESIDENTE
 Marcella Zappalera










IL SEGRETARIO
 Dott.ssa Ori Daniela

IL RESPONSABILE
 DEL PROCEDIMENTO
 Arch. Moreno Po

IL SEGRETARIO
 Dott. Mario Capalidi

Riferimento al Quadro d'Unione della Carta Topografica Generale 1:25.000



- LEGENDA**
-  confini comunali
 -  Stepping stone Esistente
 -  Stepping stone di Progetto
 -  Nodi progetto
 -  Nodo ecologico esistente _ area tampone
 -  Nodo ecologico esistente _ core area
 -  Corridoio ecologico secondario
 -  Corridoio ecologico primario
 -  Areali speciali _ connettivo ecologico diffuso