

**PIANO  
 INFRAREGIONALE  
 ATTIVITA'  
 ESTRATTIVE  
 2009-2028**

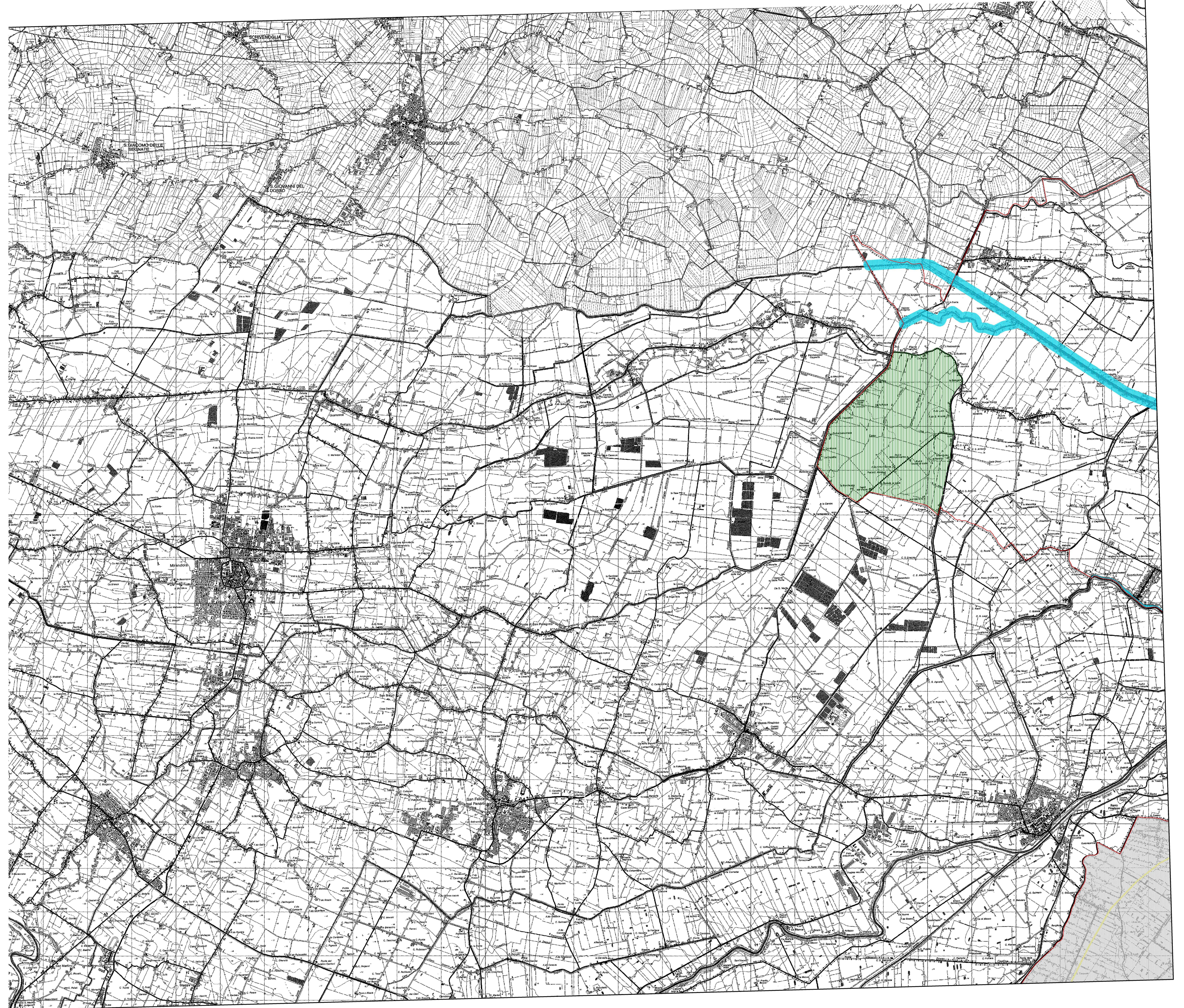
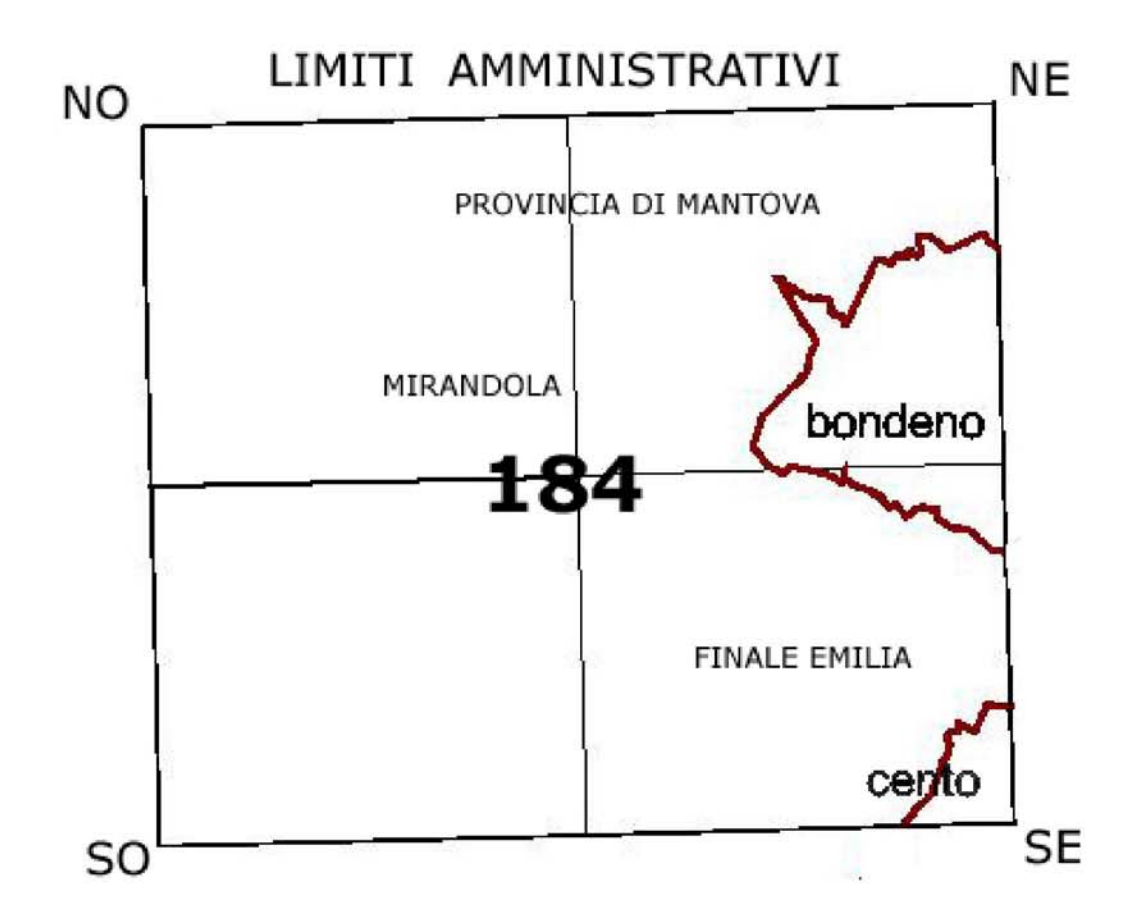
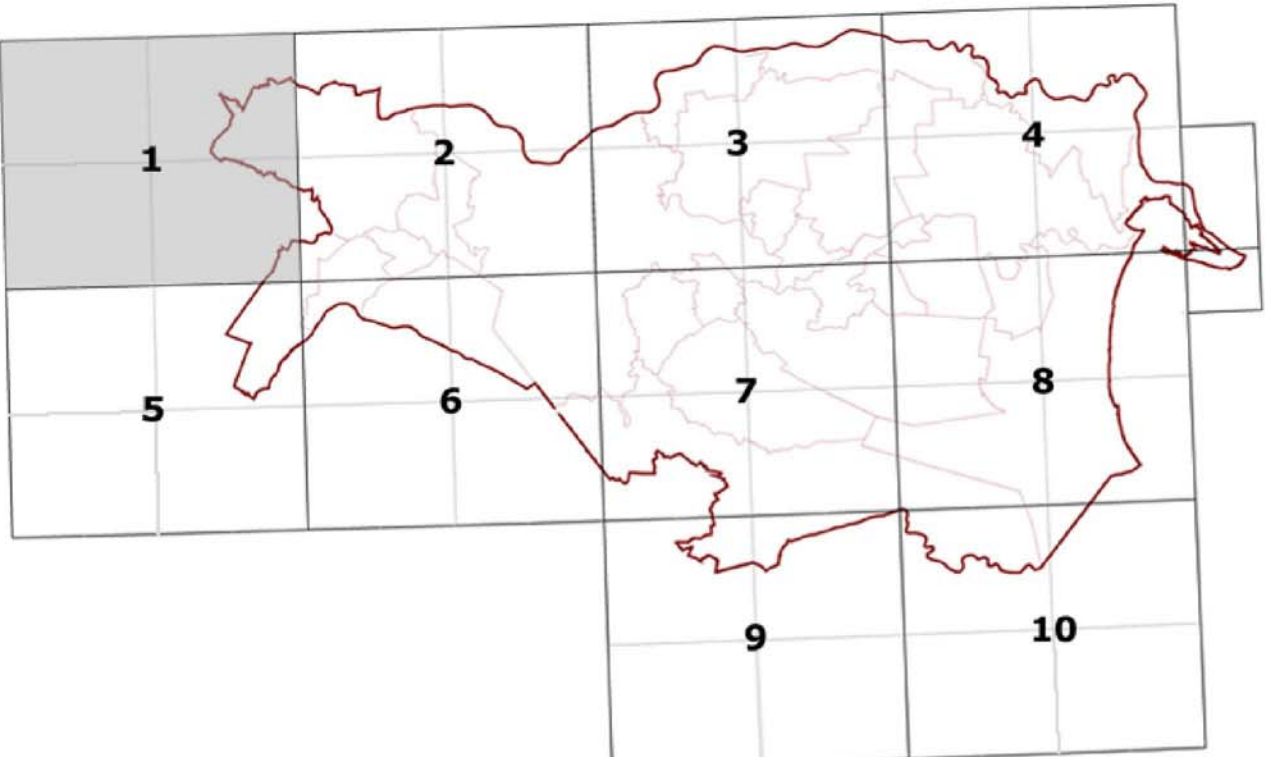
P.A.E. 2009-2018










**P.A.E.  
 Comune di Bondeno**  
 AREE PRIORITARIE PER GLI INTERVENTI DI  
 RINATURAZIONE E DI REALIZZAZIONE DELLA  
 RETE ECOLOGICA PROVINCIALE

Scala 1:25.000

IL SINDACO  
 Alan Fabbrì  
 IL RESPONSABILE  
 DEL PROCEDIMENTO  
 Arch. Moreno Fo  
 IL SEGRETARIO  
 Dott.ssa Ori Daniela  
 LA PRESIDENTE  
 Marcella Zappatera  
 IL SEGRETARIO  
 Dott. Mario Capaldi

Riferimento al Quadro d'Unione della Carta Topografica Generale 1:25.000



- LEGENDA**
-  confini comunali
  -  Stepping stone Esistente
  -  Stepping stone di Progetto
  -  Nodi progetto
  -  Nodo ecologico esistente - area tampone
  -  Nodo ecologico esistente - core area
  -  Corridoio ecologico secondario
  -  Corridoio ecologico primario
  -  Areali speciali - connettivo ecologico diffuso